

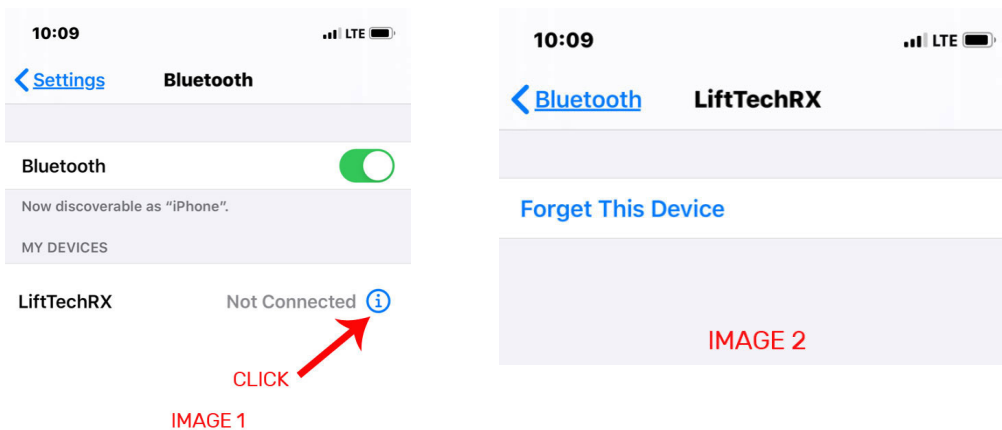

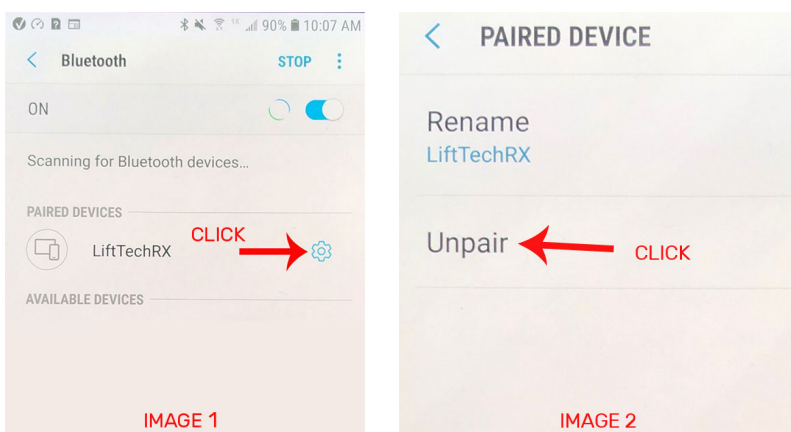


If your having an issue with your phone connecting to Bluetooth try removing Lift Tech from your Bluetooth settings on your phone. You will need to forget the device in your Bluetooth settings and start over.

For all IOS phones go to Settings, Bluetooth and find LiftTech listed under My Devices. (see image 1) On the right of Lifttech you will see Not Connected and . Click on  and then choose Forget this device. (see image 2) If you see any other Lift Tech listed under Bluetooth, make sure to forget all of them as well. Now start over from the beginning and follow the pairing IOS instructions.



For all Android Phones go to settings, Connections, Bluetooth. (see image 1) Click on  and then choose Unpair. (see image 2) If you see any other Lift Tech listed under Bluetooth, make sure to do the same and unpair them. Now start over from the beginning and follow the pairing Android instructions.



If you have any questions you can give us a call at 866-319-8877 or visit www.lifttechmarine.com